

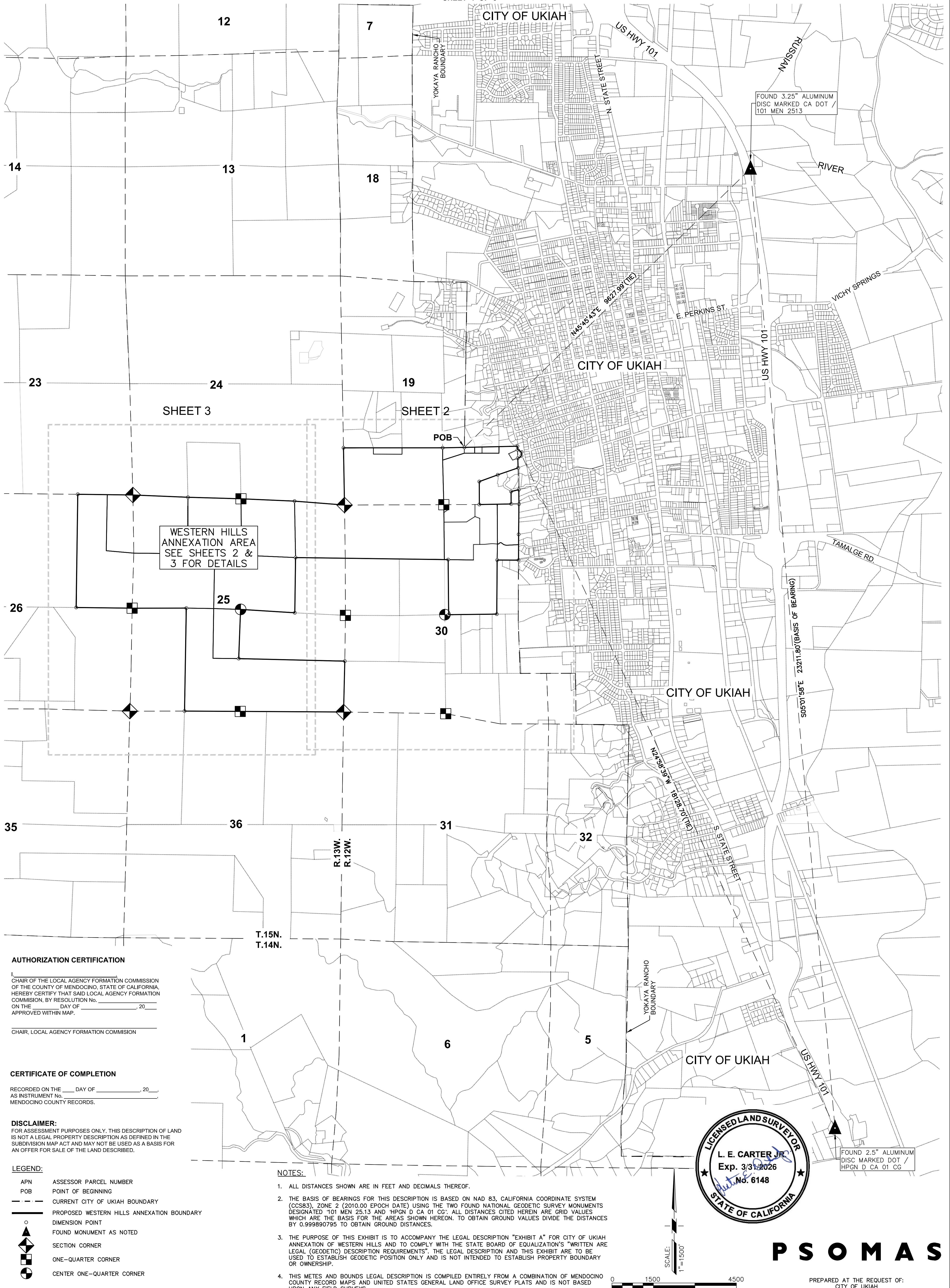
EXHIBIT "B"

CITY OF UKIAH WESTERN HILLS ANNEXATION

(LAFCo FILE No. A-2022-02)
PORTIONS OF YOKAYA RANCHO, AND PORTIONS OF SECTION 19, 23, 24, 25, 26 AND 30 OF
TOWNSHIP 15 NORTH, RANGE 13 WEST,
MOUNT DIABLO BASE & MERIDIAN (M.D.B.M.)

COUNTY OF MENDOCINO, STATE OF CALIFORNIA

NOVEMBER, 2023
SHEET 1 OF 3



WESTERN HILLS
ANNEXATION AREA
SEE SHEETS 2 &
3 FOR DETAILS

FOUND 3.25" ALUMINUM
DISC MARKED CA DOT /
101 MEN 2513

FOUND 2.5" ALUMINUM
DISC MARKED DOT /
HPGN D. CA 01 CG

AUTHORIZATION CERTIFICATION

CHAIR OF THE LOCAL AGENCY FORMATION COMMISSION
OF THE COUNTY OF MENDOCINO, STATE OF CALIFORNIA,
HEREBY CERTIFY THAT SAID LOCAL AGENCY FORMATION
COMMISSION, BY RESOLUTION No. _____
ON THE _____ DAY OF _____, 20____
APPROVED WITHIN MAP.

CHAIR, LOCAL AGENCY FORMATION COMMISSION

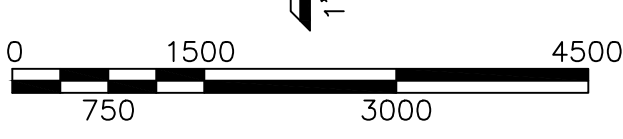
CERTIFICATE OF COMPLETION

RECORDED ON THE _____ DAY OF _____, 20____
AS INSTRUMENT No. _____
MENDOCINO COUNTY RECORDS.

DISCLAIMER:
FOR ASSESSMENT PURPOSES ONLY, THIS DESCRIPTION OF LAND
IS NOT A LEGAL PROPERTY DESCRIPTION AS DEFINED IN THE
SUBDIVISION MAP ACT AND MAY NOT BE USED AS A BASIS FOR
AN OFFER FOR SALE OF THE LAND DESCRIBED.

- LEGEND:**
- APN ASSESSOR PARCEL NUMBER
 - POB POINT OF BEGINNING
 - CURRENT CITY OF UKIAH BOUNDARY
 - PROPOSED WESTERN HILLS ANNEXATION BOUNDARY
 - o DIMENSION POINT
 - ▲ FOUND MONUMENT AS NOTED
 - ◆ SECTION CORNER
 - ONE-QUARTER CORNER
 - CENTER ONE-QUARTER CORNER

- NOTES:**
1. ALL DISTANCES SHOWN ARE IN FEET AND DECIMALS THEREOF.
 2. THE BASIS OF BEARINGS FOR THIS DESCRIPTION IS BASED ON NAD 83, CALIFORNIA COORDINATE SYSTEM (CCS83), ZONE 2 (2010.00 EPOCH DATE) USING THE TWO FOUND NATIONAL GEODETIC SURVEY MONUMENTS DESIGNATED "101 MEN 2513 AND "HPGN D. CA 01 CG". ALL DISTANCES CITED HEREIN ARE GRID VALUES WHICH ARE THE BASIS FOR THE AREAS SHOWN HEREON. TO OBTAIN GROUND VALUES DIVIDE THE DISTANCES BY 0.999890795 TO OBTAIN GROUND DISTANCES.
 3. THE PURPOSE OF THIS EXHIBIT IS TO ACCOMPANY THE LEGAL DESCRIPTION "EXHIBIT A" FOR CITY OF UKIAH ANNEXATION OF WESTERN HILLS AND TO COMPLY WITH THE STATE BOARD OF EQUALIZATION'S "WRITTEN ARE LEGAL (GEODETIC) DESCRIPTION REQUIREMENTS". THE LEGAL DESCRIPTION AND THIS EXHIBIT ARE TO BE USED TO ESTABLISH GEODETIC POSITION ONLY AND IS NOT INTENDED TO ESTABLISH PROPERTY BOUNDARY OR OWNERSHIP.
 4. THIS METES AND BOUNDS LEGAL DESCRIPTION IS COMPILED ENTIRELY FROM A COMBINATION OF MENDOCINO COUNTY RECORD MAPS AND UNITED STATES GENERAL LAND OFFICE SURVEY PLATS AND IS NOT BASED UPON ANY FIELD SURVEYS.



PSOMAS

PREPARED AT THE REQUEST OF:
CITY OF UKIAH

EXHIBIT "B"

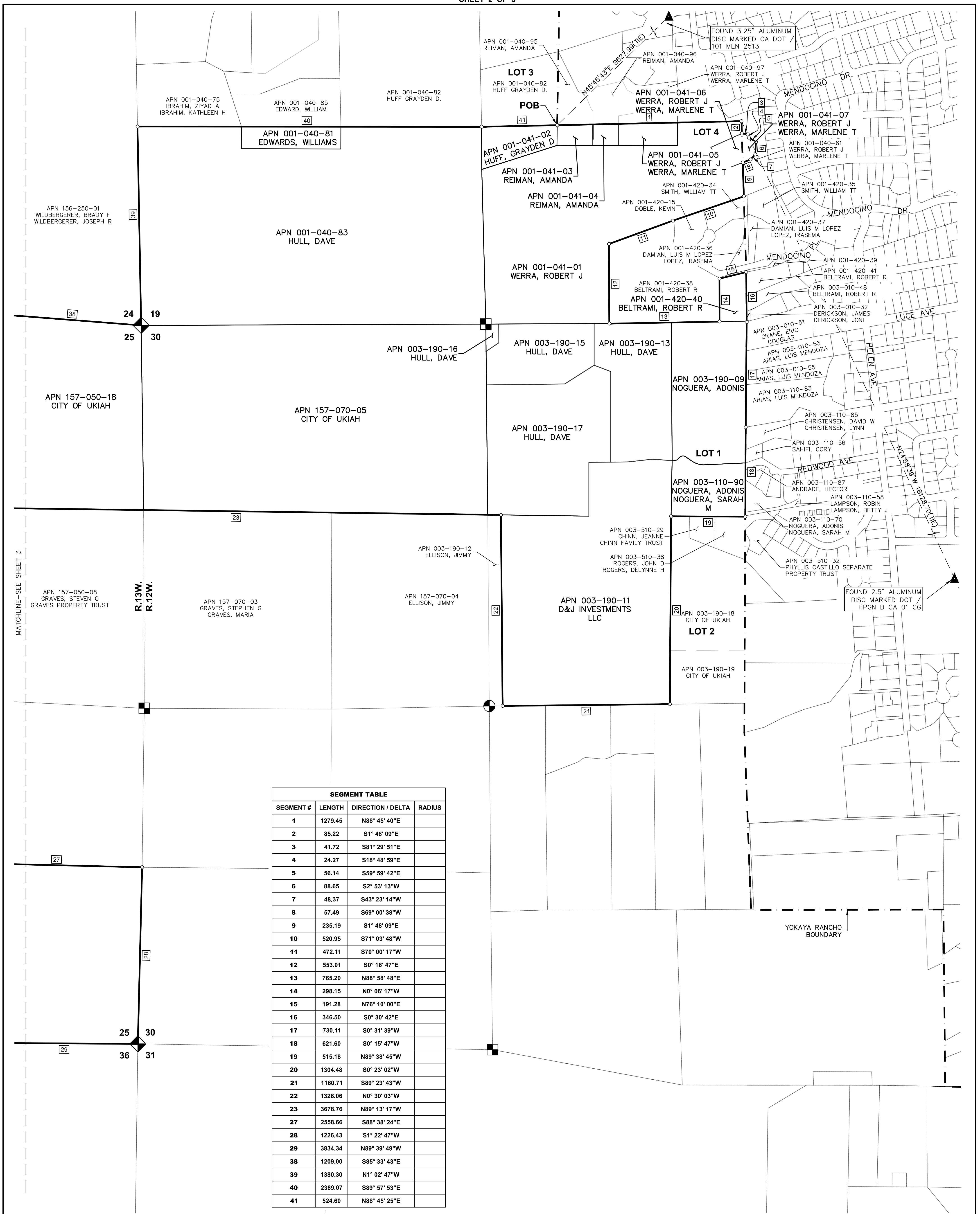
CITY OF UKIAH WESTERN HILLS ANNEXATION

(LAFCo FILE No. A-2022-02)
PORTIONS OF YOKAYA RANCHO, AND PORTIONS OF SECTION 19, 23, 24, 25, 26 AND 30 OF
TOWNSHIP 15 NORTH, RANGE 13 WEST,
MOUNT DIABLO BASE & MERIDIAN (M.D.B.M.)

COUNTY OF MENDOCINO, STATE OF CALIFORNIA

NOVEMBER, 2023

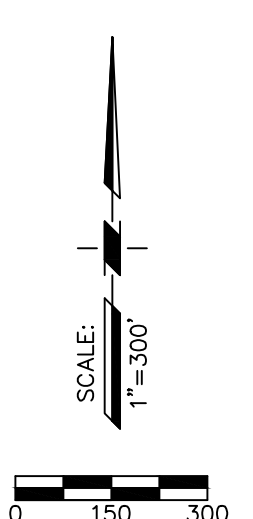
SHEET 2 OF 3



SEGMENT TABLE			
SEGMENT #	LENGTH	DIRECTION / DELTA	RADIUS
1	1279.45	N88° 45' 40"E	
2	85.22	S1° 48' 09"E	
3	41.72	S81° 29' 51"E	
4	24.27	S18° 48' 59"E	
5	56.14	S59° 59' 42"E	
6	88.65	S2° 53' 13"W	
7	48.37	S43° 23' 14"W	
8	57.49	S69° 00' 38"W	
9	235.19	S1° 48' 09"E	
10	520.95	S71° 03' 48"W	
11	472.11	S70° 00' 17"W	
12	553.01	S0° 16' 47"E	
13	765.20	N88° 58' 48"E	
14	298.15	N0° 06' 17"W	
15	191.28	N76° 10' 00"E	
16	346.50	S0° 30' 42"E	
17	730.11	S0° 31' 39"W	
18	621.60	S0° 15' 47"W	
19	515.18	N89° 38' 45"W	
20	1304.48	S0° 23' 02"W	
21	1160.71	S89° 23' 43"W	
22	1326.06	N0° 30' 03"W	
23	3678.76	N89° 13' 17"W	
27	2558.66	S88° 38' 24"E	
28	1226.43	S1° 22' 47"W	
29	3834.34	N89° 39' 49"W	
38	1209.00	S85° 33' 43"E	
39	1380.30	N1° 02' 47"W	
40	2389.07	S89° 57' 53"E	
41	524.60	N88° 45' 25"E	

- LEGEND:**
- APN ASSESSOR PARCEL NUMBER
 - POB POINT OF BEGINNING
 - CURRENT CITY OF UKIAH BOUNDARY
 - PROPOSED WESTERN HILLS ANNEXATION BOUNDARY
 - DIMENSION POINT
 - FOUND MONUMENT AS NOTED
 - ◆ SECTION CORNER
 - ONE-QUARTER CORNER
 - CENTER ONE-QUARTER CORNER

- NOTES:**
1. ALL DISTANCES SHOWN ARE IN FEET AND DECIMALS THEREOF.
 2. THE BASIS OF BEARINGS FOR THIS DESCRIPTION IS BASED ON NAD 83, CALIFORNIA COORDINATE SYSTEM (CCS83), ZONE 2 (2010.00 EPOCH DATE) USING THE TWO FOUND NATIONAL GEODETIC SURVEY MONUMENTS DESIGNATED "101 MEN 25.13 AND 'HPGN D CA 01 CG". ALL DISTANCES CITED HEREIN ARE GRID VALUES WHICH ARE THE BASIS FOR THE AREAS SHOWN HEREON. TO OBTAIN GROUND VALUES DIVIDE THE DISTANCES BY 0.999890795 TO OBTAIN GROUND DISTANCES.
 3. THE PURPOSE OF THIS EXHIBIT IS TO ACCOMPANY THE LEGAL DESCRIPTION "EXHIBIT A" FOR CITY OF UKIAH ANNEXATION OF WESTERN HILLS AND TO COMPLY WITH THE STATE BOARD OF EQUALIZATION'S "WRITTEN ARE LEGAL (GEODETIC) DESCRIPTION REQUIREMENTS". THE LEGAL DESCRIPTION AND THIS EXHIBIT ARE TO BE USED TO ESTABLISH GEODETIC POSITION ONLY AND IS NOT INTENDED TO ESTABLISH PROPERTY BOUNDARY OR OWNERSHIP.
 4. THIS METES AND BOUNDS LEGAL DESCRIPTION IS COMPILED ENTIRELY FROM A COMBINATION OF MENDOCINO COUNTY RECORD MAPS AND UNITED STATES GENERAL LAND OFFICE SURVEY PLATS AND IS NOT BASED UPON ANY FIELD SURVEYS.



PSOMAS

PREPARED AT THE REQUEST OF:
CITY OF UKIAH

EXHIBIT "B"

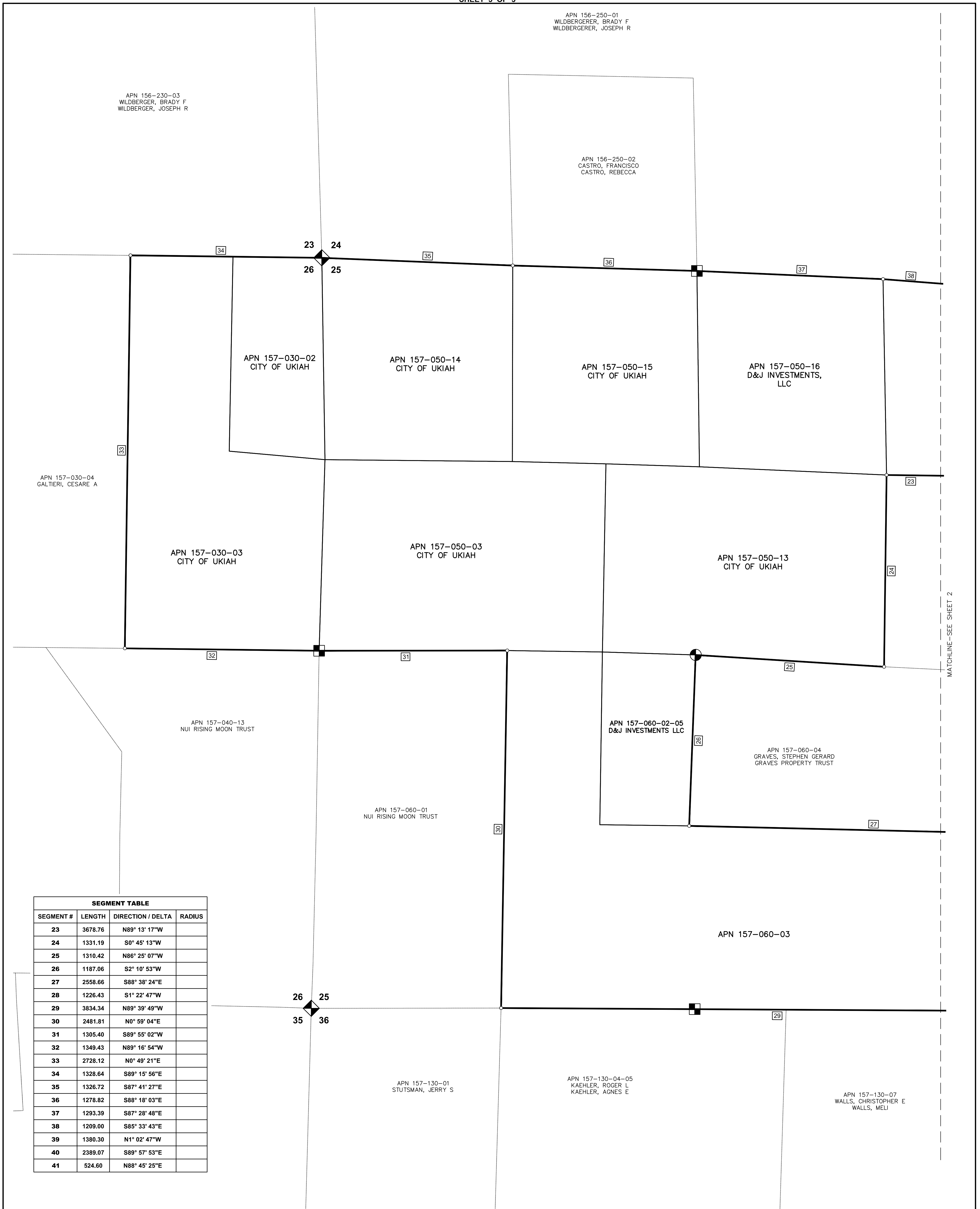
CITY OF UKIAH WESTERN HILLS ANNEXATION

(LAFCo FILE No. A-2022-02)
PORTIONS OF YOKAYA RANCHO, AND PORTIONS OF SECTION 19, 23, 24, 25, 26 AND 30 OF
TOWNSHIP 15 NORTH, RANGE 13 WEST,
MOUNT DIABLO BASE & MERIDIAN (M.D.B.M.)

COUNTY OF MENDOCINO, STATE OF CALIFORNIA

NOVEMBER, 2023

SHEET 3 OF 3

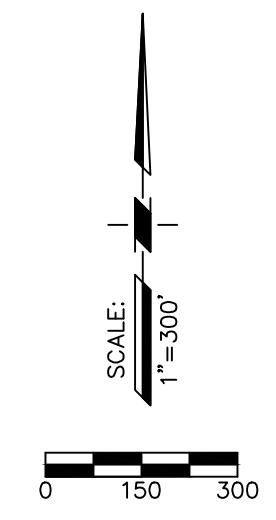


SEGMENT TABLE

SEGMENT #	LENGTH	DIRECTION / DELTA	RADIUS
23	3678.76	N89° 13' 17"W	
24	1331.19	S0° 45' 13"W	
25	1310.42	N86° 25' 07"W	
26	1187.06	S2° 10' 53"W	
27	2558.66	S88° 38' 24"E	
28	1226.43	S1° 22' 47"W	
29	3834.34	N89° 39' 49"W	
30	2481.81	N0° 59' 04"E	
31	1305.40	S89° 55' 02"W	
32	1349.43	N89° 16' 54"W	
33	2728.12	N0° 49' 21"E	
34	1328.64	S89° 15' 56"E	
35	1326.72	S87° 41' 27"E	
36	1278.82	S88° 18' 03"E	
37	1293.39	S87° 28' 48"E	
38	1209.00	S85° 33' 43"E	
39	1380.30	N1° 02' 47"W	
40	2389.07	S89° 57' 53"E	
41	524.60	N88° 45' 25"E	

- LEGEND:**
- APN ASSESSOR PARCEL NUMBER
 - POB POINT OF BEGINNING
 - CURRENT CITY OF UKIAH BOUNDARY
 - - - PROPOSED WESTERN HILLS ANNEXATION BOUNDARY
 - o DIMENSION POINT
 - ▲ FOUND MONUMENT AS NOTED
 - ◆ SECTION CORNER
 - ONE-QUARTER CORNER
 - ⊙ CENTER ONE-QUARTER CORNER

- NOTES:**
- ALL DISTANCES SHOWN ARE IN FEET AND DECIMALS THEREOF.
 - THE BASIS OF BEARINGS FOR THIS DESCRIPTION IS BASED ON NAD 83, CALIFORNIA COORDINATE SYSTEM (CCS83), ZONE 2 (2010.00 EPOCH DATE) USING THE TWO FOUND NATIONAL GEODETIC SURVEY MONUMENTS DESIGNATED "101 MEN 25.13 AND HPGN D CA 01 CG". ALL DISTANCES CITED HEREIN ARE GRID VALUES WHICH ARE THE BASIS FOR THE AREAS SHOWN HEREON. TO OBTAIN GROUND VALUES DIVIDE THE DISTANCES BY 0.999890795 TO OBTAIN GROUND DISTANCES.
 - THE PURPOSE OF THIS EXHIBIT IS TO ACCOMPANY THE LEGAL DESCRIPTION "EXHIBIT A" FOR CITY OF UKIAH ANNEXATION OF WESTERN HILLS AND TO COMPLY WITH THE STATE BOARD OF EQUALIZATION'S "WRITTEN ARE LEGAL (GEODETIC) DESCRIPTION REQUIREMENTS". THE LEGAL DESCRIPTION AND THIS EXHIBIT ARE TO BE USED TO ESTABLISH GEODETIC POSITION ONLY AND IS NOT INTENDED TO ESTABLISH PROPERTY BOUNDARY OR OWNERSHIP.
 - THIS METES AND BOUNDS LEGAL DESCRIPTION IS COMPILED ENTIRELY FROM A COMBINATION OF MENDOCINO COUNTY RECORD MAPS AND UNITED STATES GENERAL LAND OFFICE SURVEY PLATS AND IS NOT BASED UPON ANY FIELD SURVEYS.



PSOMAS

PREPARED AT THE REQUEST OF:
CITY OF UKIAH