

**Resolution of
The Local Agency Formation Commission of Mendocino County
Approving the**

**Countywide Cemetery Districts
Municipal Service Review and Sphere of Influence Update 2017
LAFCo Resolution No. 16-17-06**

WHEREAS, the Mendocino Local Agency Formation Commission, hereinafter referred to as the "Commission", is authorized to conduct municipal service reviews and establish, amend, and update spheres of influence for local governmental agencies whose jurisdictions are within Mendocino County; and

WHEREAS, the Commission conducted a municipal service review to evaluate cemetery district services within the geographic area of Mendocino County pursuant to California Government Code Section 56430; and

WHEREAS, the Commission conducted a sphere of influence update for the eight cemetery districts in Mendocino County pursuant to California Government Code Section 56425; and

WHEREAS, the Executive Officer gave sufficient notice of a public hearing to be conducted by the Commission in the form and manner prescribed by law; and

WHEREAS, the Executive Officer's report and recommendations on the municipal service review and sphere of influence update were presented to the Commission in the manner provided by law; and

WHEREAS, the Commission heard and fully considered all the evidence presented at a public hearing held on the municipal service review and sphere of influence update on March 6, 2017 and April 3, 2017 for the following agencies:

Anderson Valley Cemetery District
Cemetery District of the Redwoods
Covelo Public Cemetery District
Hopland Cemetery District
Mendocino-Little River Cemetery District
Potter Valley Cemetery District
Russian River Cemetery District
Westport-Ten Mile Cemetery District

WHEREAS, the Commission considered all the factors required under California Government Code Sections 56430 and 56425.

NOW, THEREFORE, the Mendocino Local Agency Formation Commission does hereby RESOLVE, DETERMINE, and ORDER as follows:

1. The Commission, as Lead Agency, finds the municipal service review is exempt from further review under the California Environmental Quality Act pursuant to California Code of Regulations Section 15306. This finding is based on the use of the municipal service review as a data collection and service evaluation study. The information contained within the municipal service review may be used to consider future actions that will be subject to additional environmental review.

2. The Commission, as Lead Agency, finds the sphere of influence update is exempt from further review under the California Environmental Quality Act pursuant to California Code of Regulations Section 15061(b)(3). This finding is based on the Commission determining with certainty the update will have no possibility of significantly effecting the environment given no new land use or municipal service authority is granted.
3. This municipal service review and sphere of influence update is assigned the following distinctive short-term designation: "Countywide Cemetery Districts MSR/SOI Update 2017"
4. Pursuant to Government Code Section 56430(a), the Commission makes the written statement of determinations included in the municipal service review, hereby incorporated by reference.
5. Pursuant to Government Code Section 56425(e), the Commission makes the written statement of determinations included in the sphere of influence update, hereby incorporated by reference.
6. The Executive Officer shall revise the official records of the Commission to reflect this update of the spheres of influence for the eight cemetery districts in Mendocino County.

BE IT FURTHER RESOLVED that the Countywide Cemetery Districts MSR/SOI Update 2017 is hereby approved and incorporated herein by reference and a sphere of influence is established to be coterminous with the district boundary for each of the eight cemetery districts in Mendocino County as depicted in the Countywide Cemetery Districts MSR/SOI Update 2017 and in Exhibit "A".

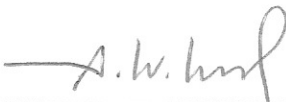
The foregoing Resolution was passed and duly adopted at a regular meeting of the Mendocino Local Agency Formation Commission held on this 3rd day of April, 2017, by the following vote:

AYES: Commissioners Brown, Doble, Gonzalez, McCowen, McNerlin, Silver, and Ward
NOES: none
ABSTAIN: none
ABSENT: Commissioners Hamburg and Orth

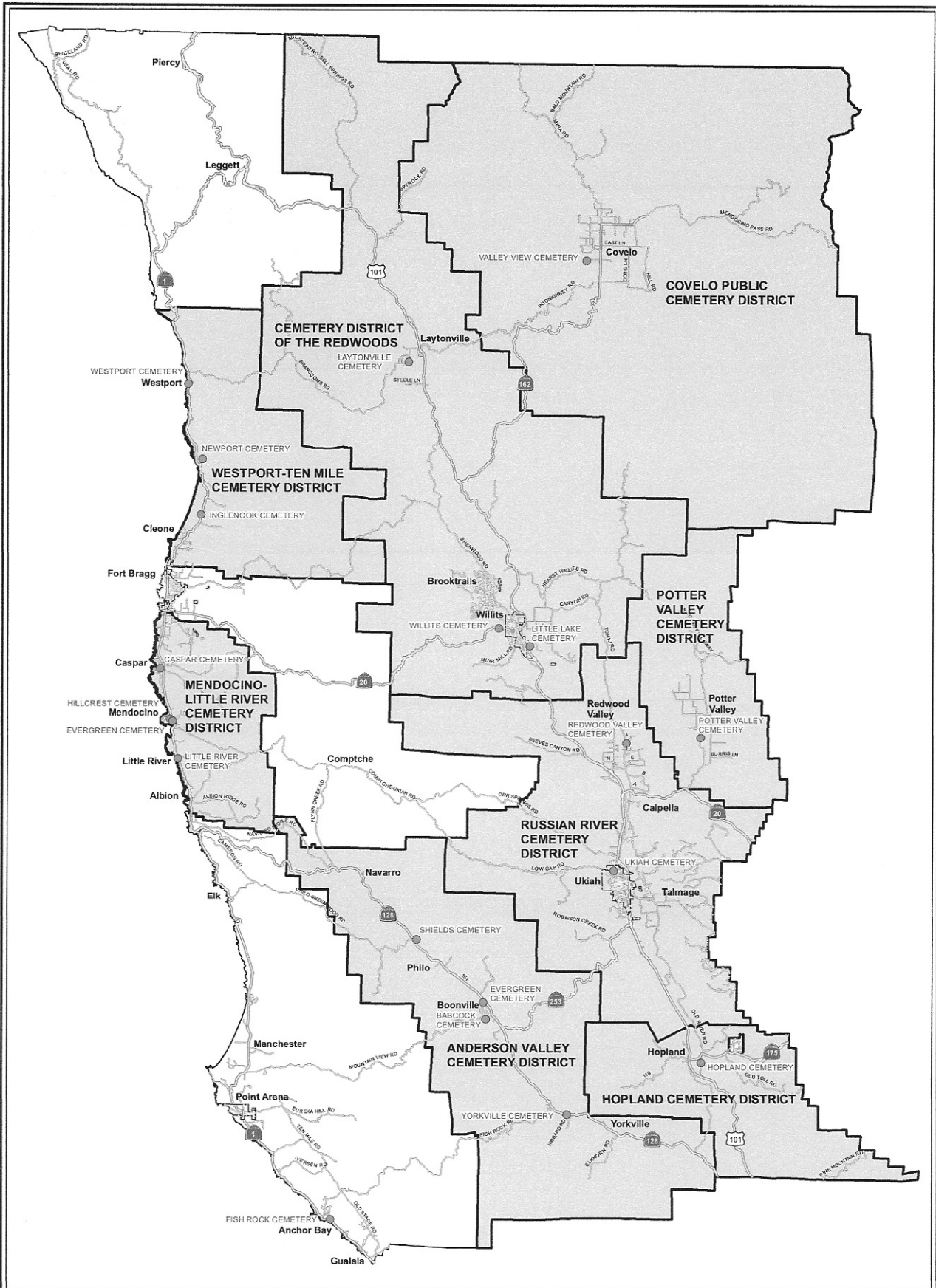
ATTEST:



UMA HINMAN, Executive Officer



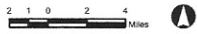
GERALD WARD, Chair

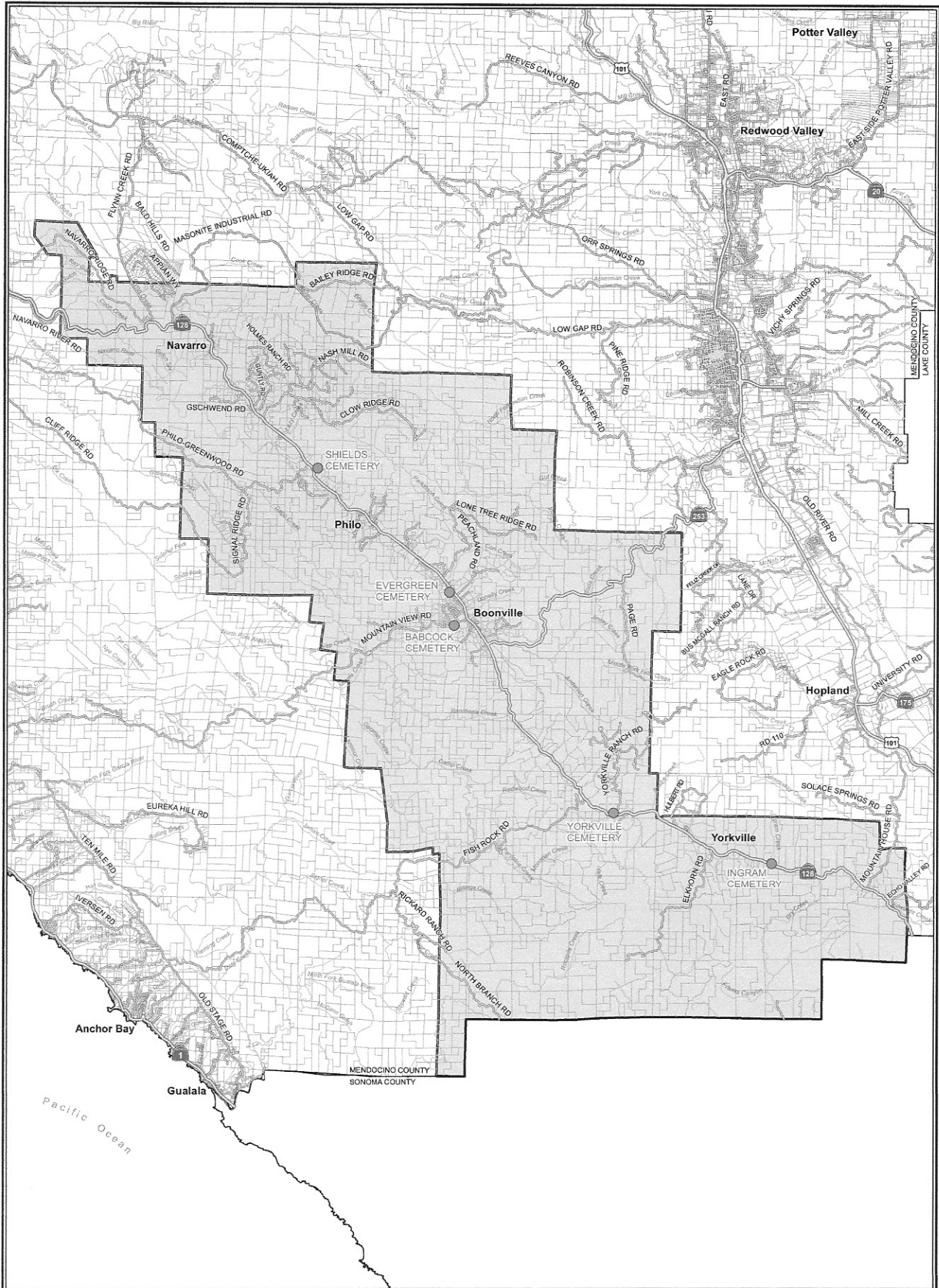


Mendocino County Cemetery Districts

- Cemetery Districts
- Incorporated Cities
- Cemetery Locations
- Highways
- Roads

Source: This map was prepared by the Mendocino County Department of Information Services GIS Program, January 2017.
 Note: This map is not a survey product.



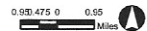


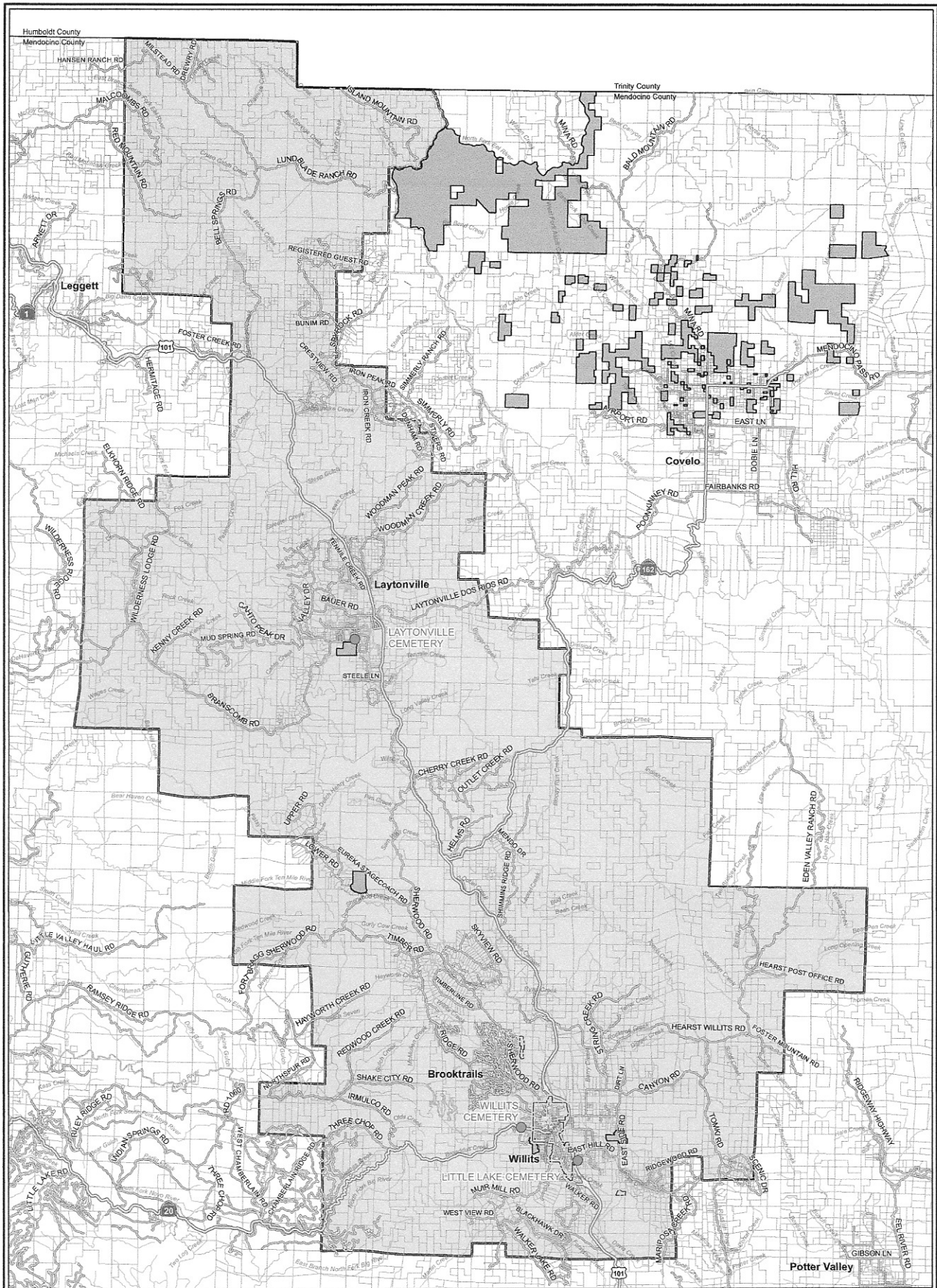
Anderson Valley Cemetery District

Source: This map was prepared by the Mendocino County Department of Information Services GIS Program, February 2017.

Note: This map is not a survey product. The Native American Land Areas as depicted on this map may not be a complete inventory of such lands.

- Anderson Valley Cemetery District
- Incorporated Cities
- Native American Lands
- Parcels
- Cemetery Locations
- Highways
- Roads
- Streams





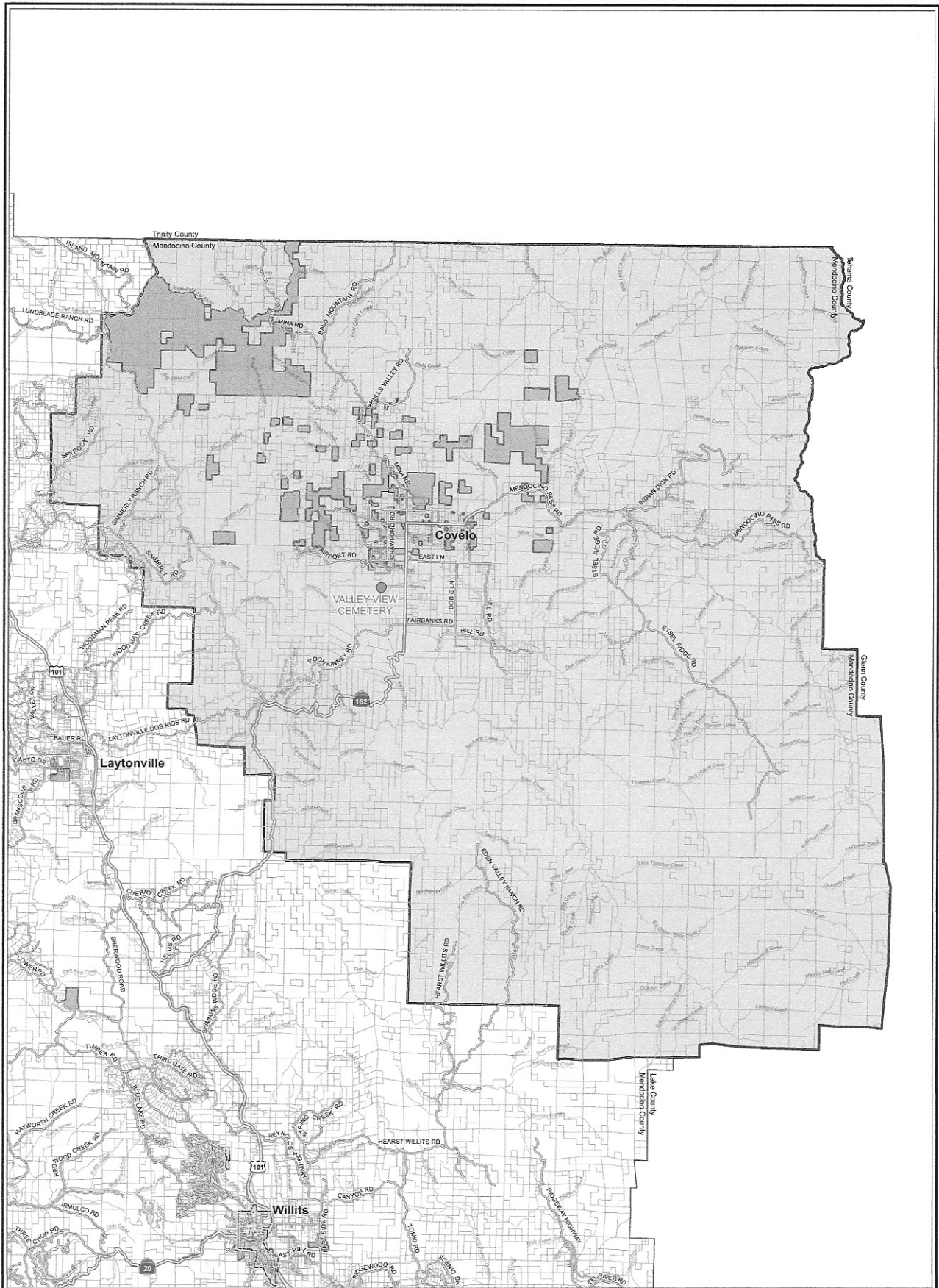
Cemetery District of the Redwoods

Source: This map was prepared by the Mendocino County Department of Information Services GIS Program, February 2017.

Note: This map is not a survey product. The Native American Land Areas as depicted on this map may not be a complete inventory of such lands.

- Cemetery District of the Redwoods
- Incorporated Cities
- Native American Lands
- Parcels
- Cemetery Locations
- Highways
- Roads
- Streams





Covelo Cemetery District

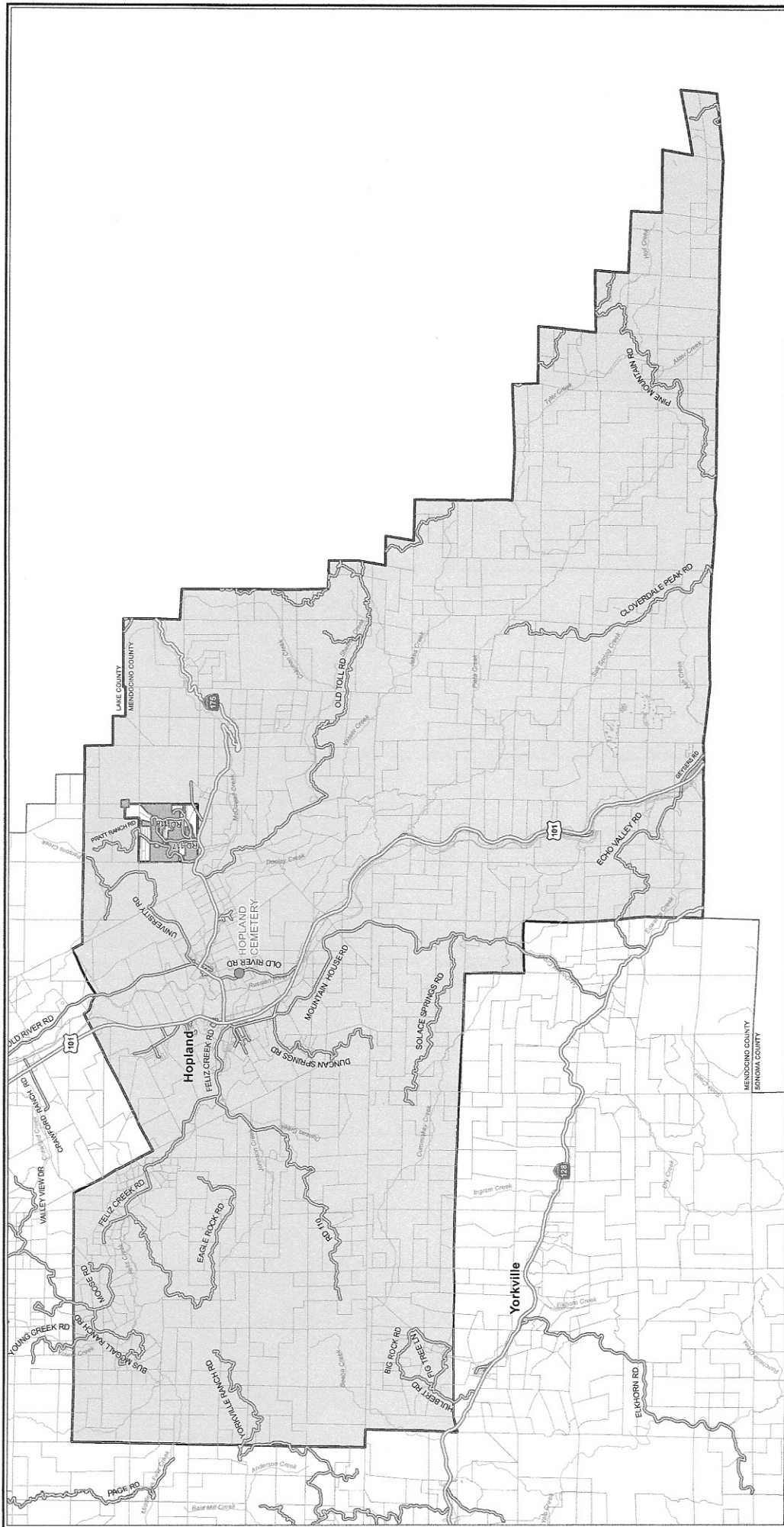
Source: This map was prepared by the Mendocino County Department of Information Services GIS Program, February 2017.

Note: This map is not a survey product.

The Native American Land Areas as depicted on this map may not be a complete inventory of such lands.

- Covelo Cemetery District
- Incorporated Cities
- Native American Lands
- Parcels
- Cemetery Locations
- Highways
- Roads
- Streams



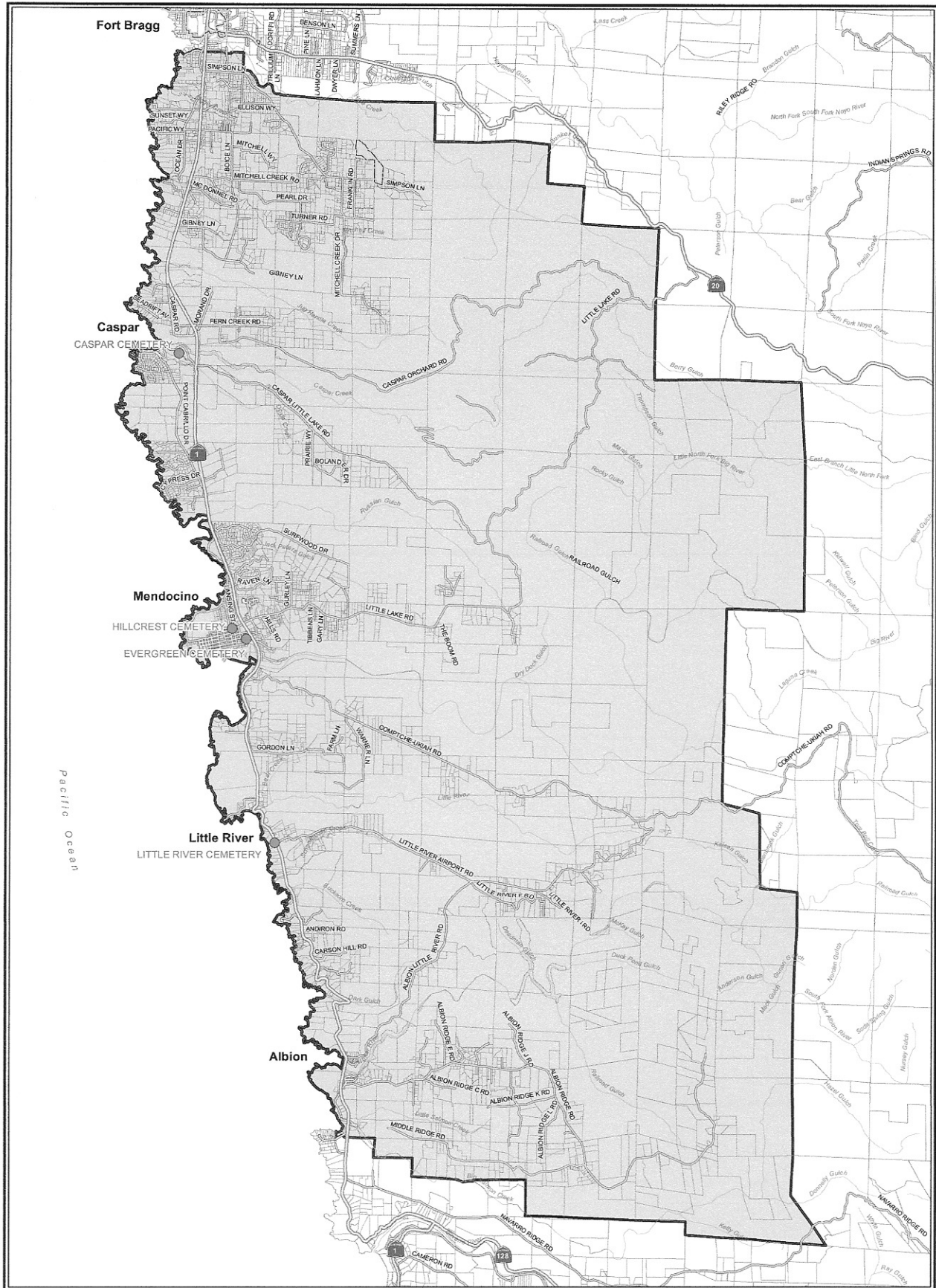


Hopland Cemetery District

Source: This map was prepared by the Mendocino County Department of Information Services GIS Program, February 2017.
 Note: This map is not a survey product.
 The Native American Land Areas as depicted on this map may not be a complete inventory of such lands.

- Hopland Cemetery District
- Native American Lands
- Parcels
- Cemetery Locations
- Highways
- Roads
- Streams

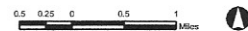


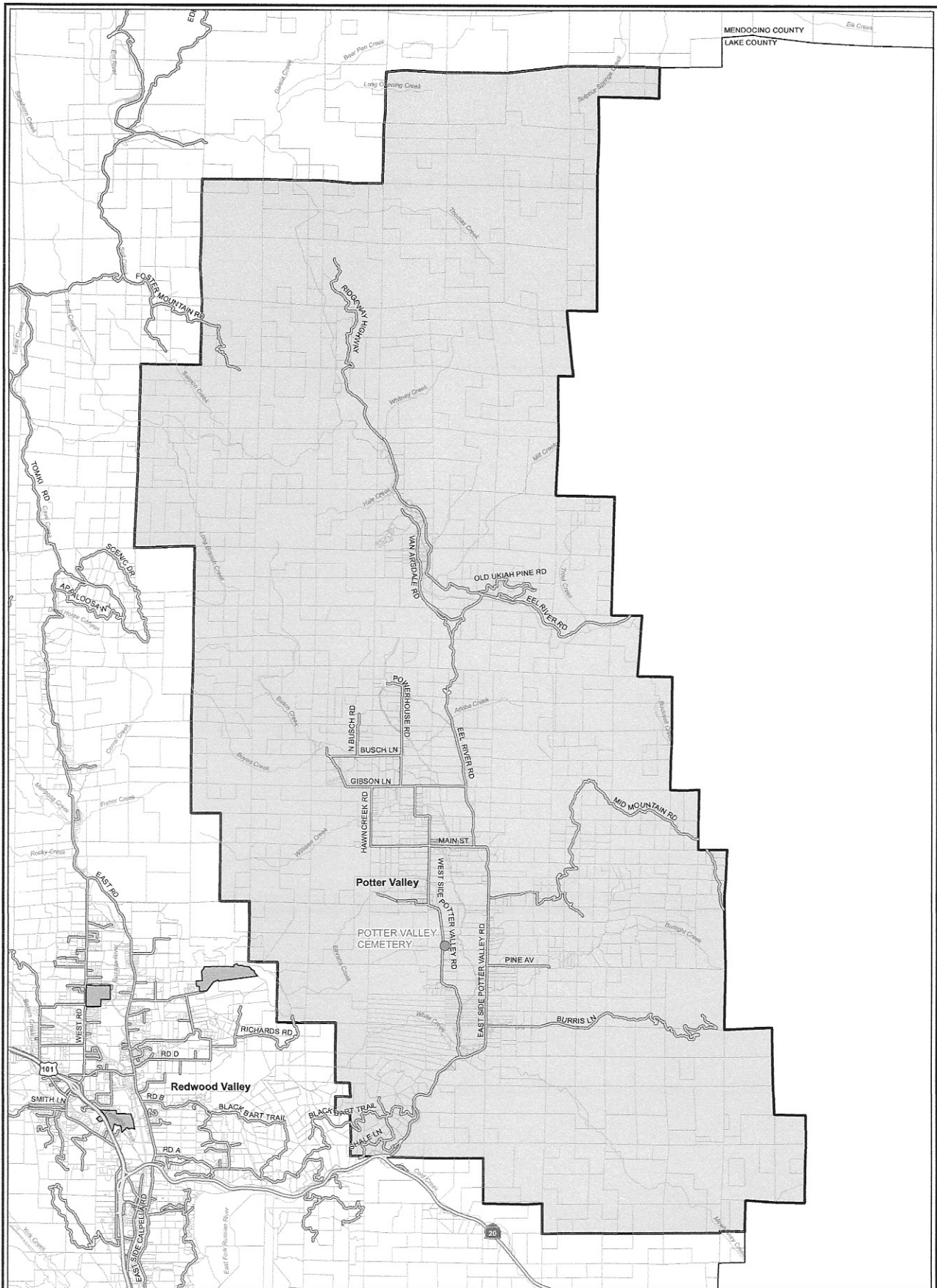


Mendocino Little River Cemetery District

- Mendocino Little River Cemetery District
- City of Fort Bragg
- Parcels
- Cemetery Locations
- Highways
- Roads
- Streams

Source: This map was prepared by the Mendocino County Department of Information Services GIS Program, February 2017.
 Note: This map is not a survey product.
 The Native American Land Areas as depicted on this map may not be a complete inventory of such lands.





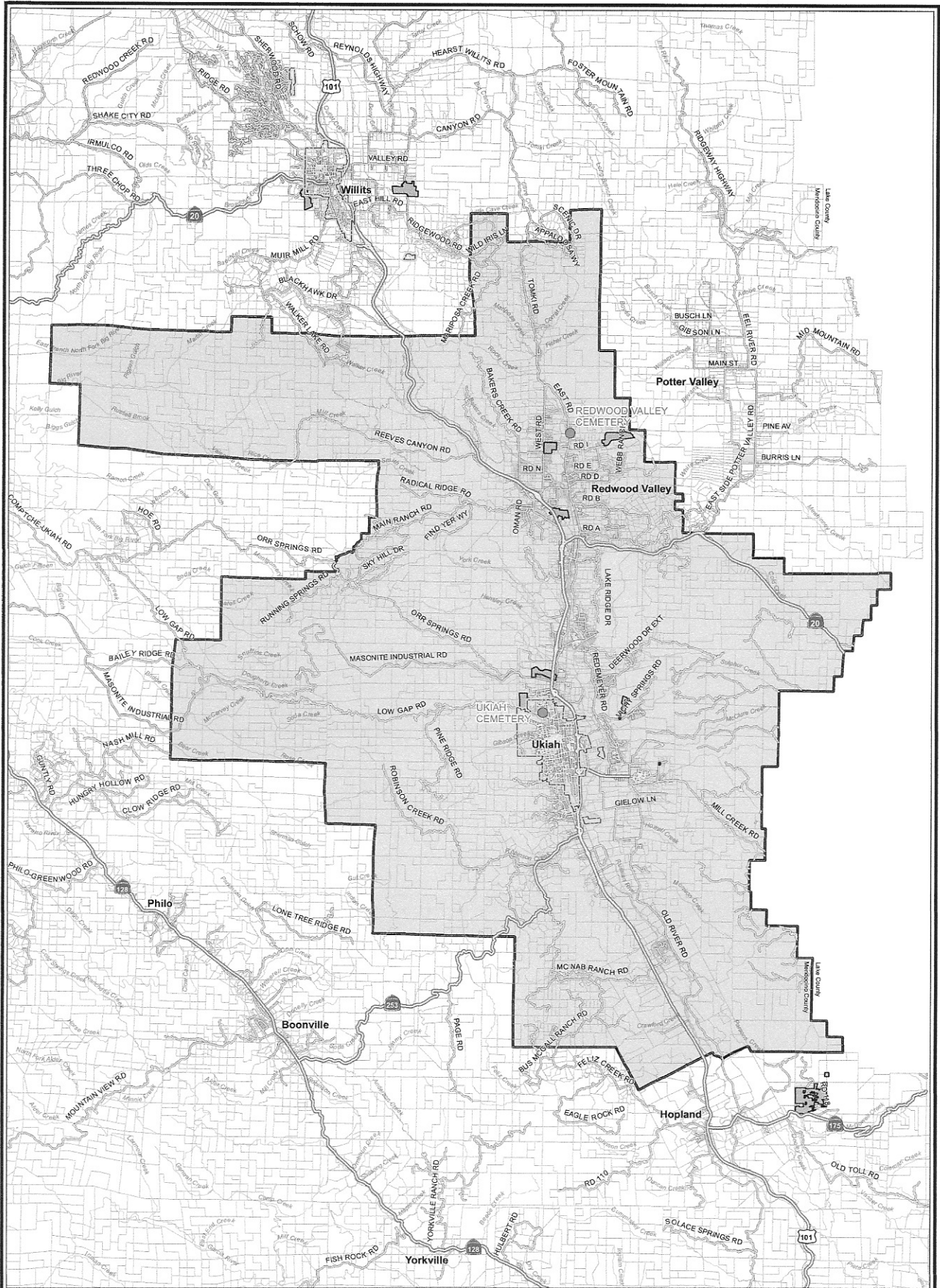
Potter Valley Cemetery District

Source: This map was prepared by the Mendocino County Department of Information Services GIS Program, February 2017.

Note: This map is not a survey product. The Native American Land Areas as depicted on this map may not be a complete inventory of such lands.

- Potter Valley Cemetery District
- Native American Lands
- Parcels
- Cemetery Locations
- Highways
- Roads
- Streams





Russian River Cemetery District

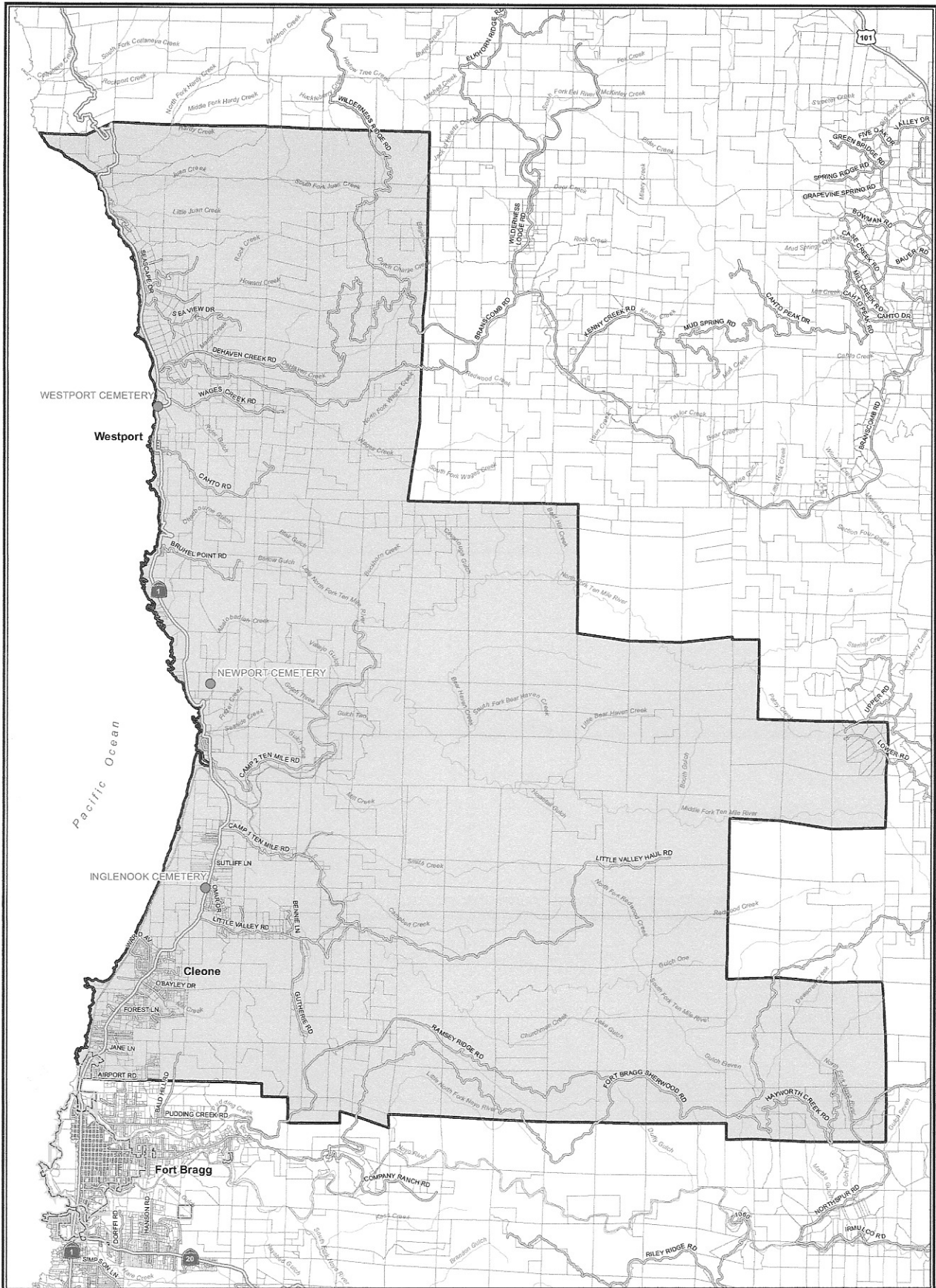
Source: This map was prepared by the Mendocino County Department of Information Services GIS Program, February 2017.

Note: This map is not a survey product

The Native American Land Areas as depicted on this map may not be a complete inventory of such lands.

- Russian River Cemetery District
- Incorporated Cities
- Native American Lands
- Parcels
- Cemetery Locations
- Highways
- Roads
- Streams

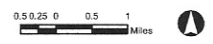


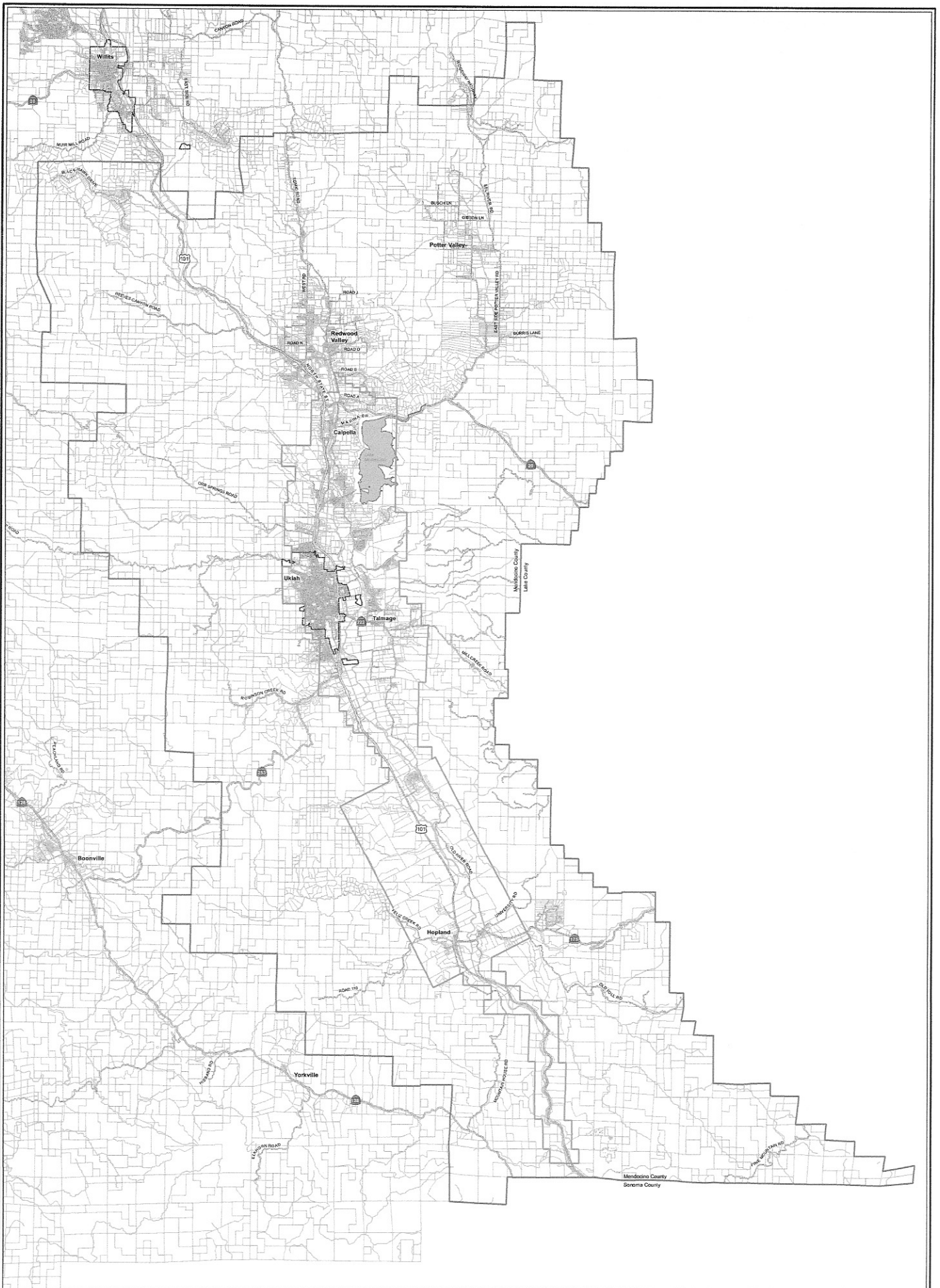


Westport Ten Mile Cemetery District

- Westport Ten Mile Cemetery District
- Incorporated Cities
- Parcels
- Cemetery Locations
- Highways
- Roads
- Streams

Source: This map was prepared by the Mendocino County Department of Information Services GIS Program, February 2017.
 Note: This map is not a survey product.
 The Native American Land Areas as depicted on this map may not be a complete inventory of such lands.



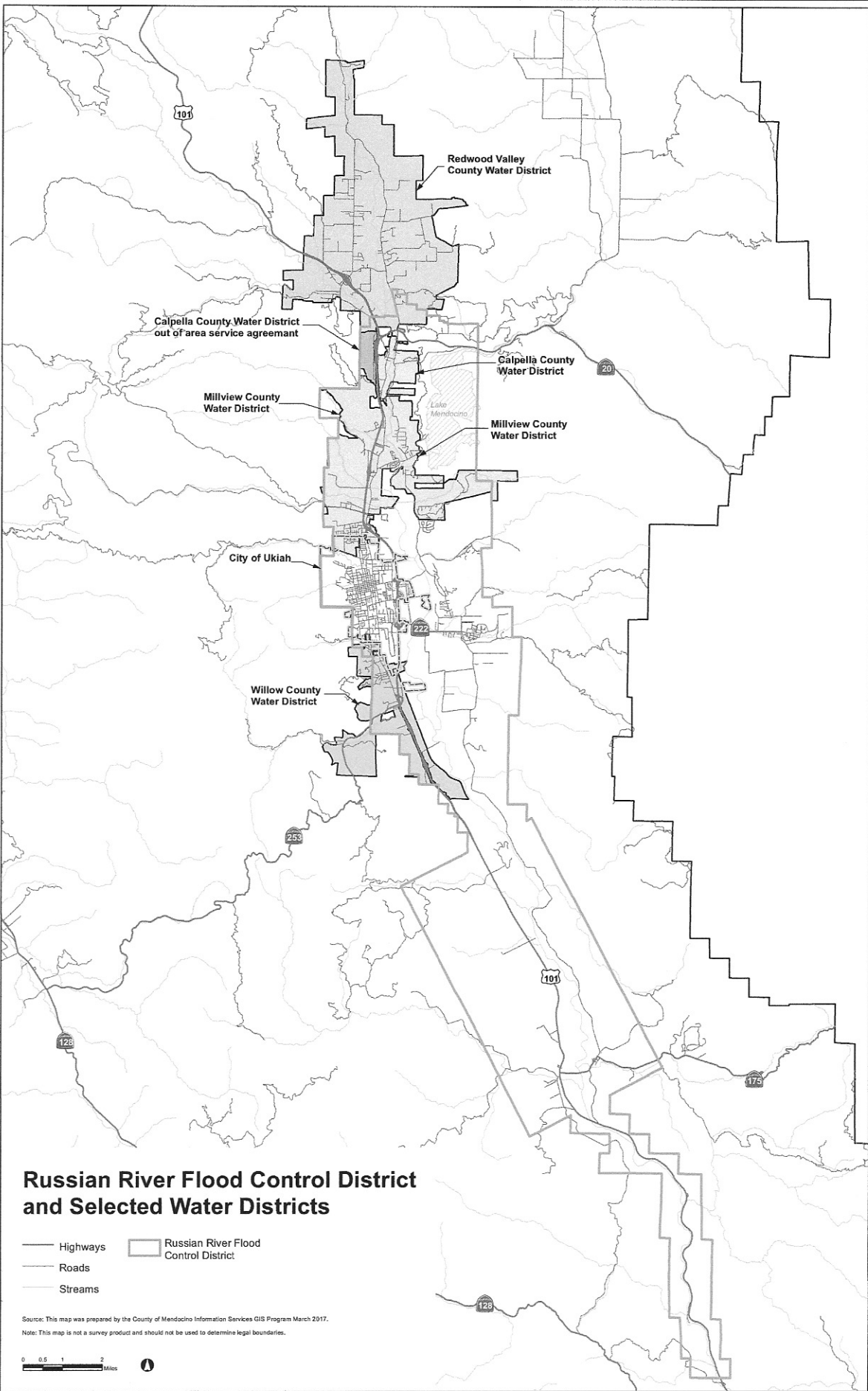


Russian River Flood Control District Sphere of Influence

Source: This map was prepared by the Mendocino County Division of Information Services GIS Program, March 2017.
 Note: This map is not a survey product and should not be used to determine legal boundaries.

- Russian River Flood Control District
- Sphere of Influence
- Incorporated City
- Parcels
- Highways
- Roads
- Streams





Russian River Flood Control District and Selected Water Districts

- Highways
- Roads
- Streams
- ▭ Russian River Flood Control District

Source: This map was prepared by the County of Mendocino Information Services GIS Program March 2017.
 Note: This map is not a survey product and should not be used to determine legal boundaries.

